

German Ports

Carrier Info Meeting



01

Introduction to Secure Release Order: What is changing and why?

02

Next Steps: What preparations are necessary?

03

Functions for Carriers: How does SRO work?

04

FAQs

01

Introduction to Secure Release Order: What is changing and why?

02

Next Steps: What preparations are necessary?

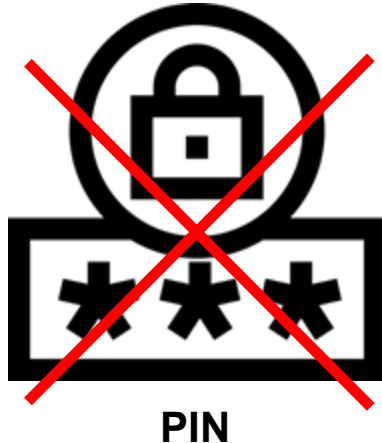
03

Functions for Carriers: How does SRO work?

04

FAQs

There are increasing security gaps in the import process which have resulted in an amendment of the Port Security Act.



PIN



Insecure

Currently, the old process involving an unsecured release reference (PIN) poses a significant **safety risk for both employees and customers.**



Untraceable

The chain of authorised parties is currently neither logged nor registered anywhere. This results in **container pick-ups being untraceable for authorities.**



The amendment to the *Port Security Act* eliminates the use of PINs and introduces a secure release order process.

German Ports' SRO enhances security and standardises container import processes in line with the Port Security Act.



DAKOSY dbh



**Hamburg,
Bremerhaven and
Wilhelmshaven**



Increased Safety

By digitalising the authorisation for container pick-ups, the **safety of employees and customers is increased**



Increased Traceability

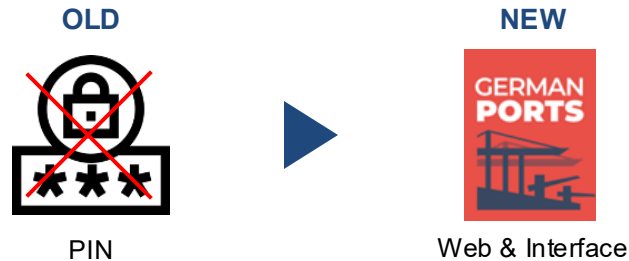
The chain of authorised parties is logged in German Ports, making **container pick-ups traceable for authorities**



Standardised Processes

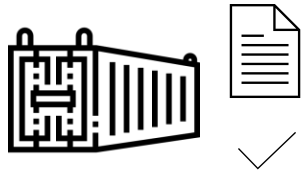
Through the creation of a new platform, import processes at German Ports are further **standardised for Hamburg, Bremerhaven and Wilhelmshaven**

The release reference (PIN) will no longer be used and will be replaced by a digital Pick-Up Right.



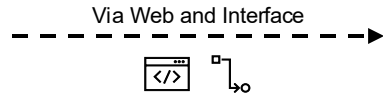
This is a **legal obligation starting from the 01 October 2025!**

German Ports creates digital Pick-Up Rights from Release Orders.



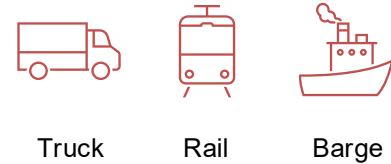
Release Order

Carriers create a Release Order which is sent to German Ports



Pick-Up Right

A Pick-Up Right is generated by German Ports for that container



Container Pick-Up

The Pick-Up Right is needed by the company picking up the container

This change affects all modes of transport for full import containers.

All modes of transport



Truck



Rail



Barge

A right to collect a container is passed on via German Ports and checked against German Ports before collection.

The future process



Carrier

1

The carrier sends the Pick-Up Right to the respective forwarder via German Ports



Forwarder

2

The forwarder receives the Pick-Up Right, transfers the Pick-Up Right to the next entity or collects the container



Logistician

3

The logistician receives the Pick-Up Right, books a slot and drives to the respective terminal



Terminal

4

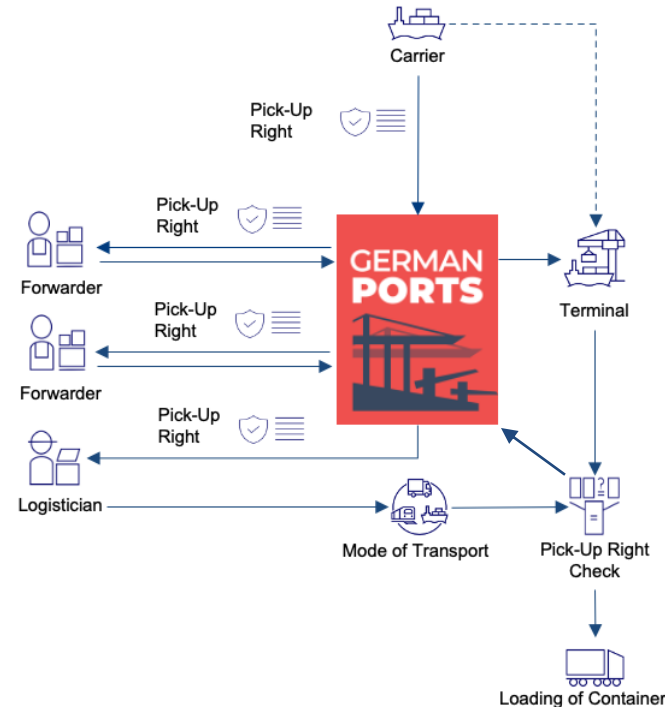
The person collecting the container identifies him/herself at the terminal. The Terminal checks against German Ports, if the entity in question holds the digital Pick-Up Right



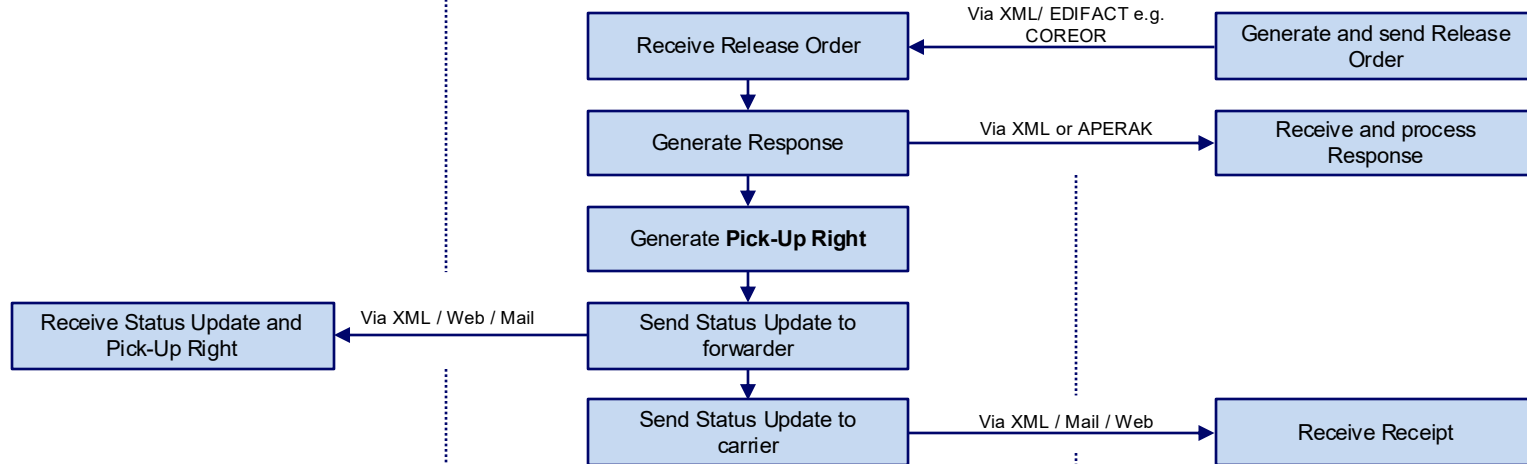
Trucker

5

If the data matches, the container can be loaded onto the respective vehicle



The SRO process starts when a carrier generates a Release Order.

**Forwarder****German Ports****Carrier**

Acting as both carrier and forwarder requires twofold technical integration.



Carriers with dual role:

Carriers that also act as freight forwarders must ensure technical integration both as carrier and as forwarder.



Review technical documentation

<https://germanports.com/en/spediteur-und-logistiker/>

Typical forwarder functions using pick-up rights:



Pass (to next subcontractor)



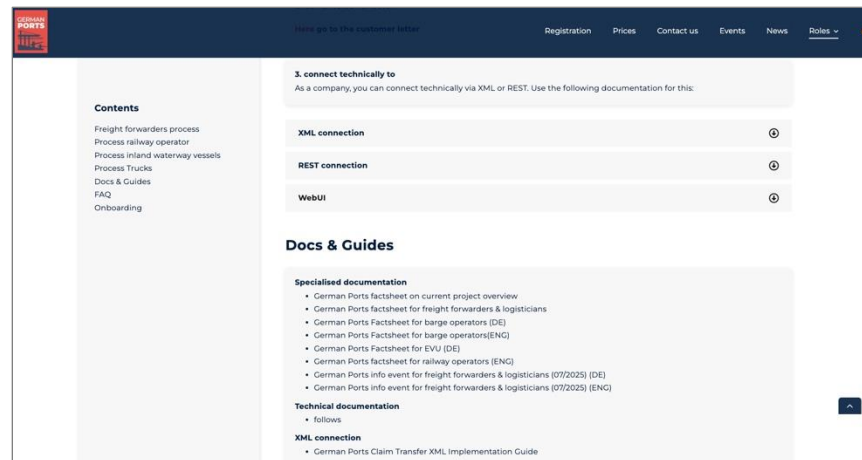
Revoke (from the next subcontractor)



Return (to previous contractor)



Use (to collect a container)



The screenshot shows the German Ports website interface. The top navigation bar includes links for Registration, Prices, Contact us, Events, News, and Roles. The main content area is titled "3. connect technically to" and provides information on connecting via XML or REST. It lists three categories: XML connection, REST connection, and WebUI, each with a circular icon. Below this, there is a "Docs & Guides" section with a list of specialized documentation, including factsheets for various operators and event information. A "Technical documentation" section follows, listing a "follows" link and an "XML connection" link with a detailed implementation guide.

01

Introduction to Secure Release Order: What is changing and why?

02

Next Steps: What preparations are necessary?

03

Functions for Carriers: How does SRO work?

04

FAQs

Carriers will also need to take preparatory steps.

1

Review technical and functional documentation

Familiarise yourself with the provided materials

<https://germanports.com/en/reeder/>

Assess what changes are needed for your systems and estimate how much time implementation will likely require.

2

Register your carrier for German Ports

3

Inform your partners and sub-contractors

Docs & Guides

Specialised documentation

- German Ports Factsheet
- German Ports information sheet for shipowners

Technical documentation

- German Ports COREOR Implementation Guide
- German Ports APERAK Implementation Guide
- German Ports Release Order Implementation Guide
- German Ports Release Order XSD
- German Ports Example COREOR for Carrier's Haulage
- German Ports Example COREOR for Merchant's Haulage

User Guide

Step-by-step instructions: How do I create exemptions, how do I revoke them?

Carriers will also need to take preparatory steps.



1

Review technical and functional documentation

Familiarise yourself with the provided materials
<https://germanports.com/en/reeder/>.

Assess what changes are needed for your systems and estimate how much time implementation will likely require.

2

Register your carrier for German Ports

Register via <https://www.germanports.com/en/registration/>.
This is needed to prepare contractual and technical setups.

3

Inform your partners and sub-contractors

A screenshot of the German Ports website's registration page. The page has a dark blue background. At the top left is the German Ports logo. At the top right is a navigation menu with links: Registration, Prices, Contact us, Events, News, and Roles. The main heading is "Registration for participation in German Ports". Below this is a paragraph explaining that registration is mandatory by law and that users must complete a form and agree to terms. There is a "Note on the registration process" section. At the bottom, there is a form titled "The company" with two input fields: "Company name" and "Street and no.". The form is currently empty.

Carriers will also need to take preparatory steps.



1

Review technical and functional documentation

Familiarise yourself with the provided materials

<https://germanports.com/en/reeder/>.

Assess what changes are needed for your systems and estimate how much time implementation will likely require.

2

Register your carrier for German Ports

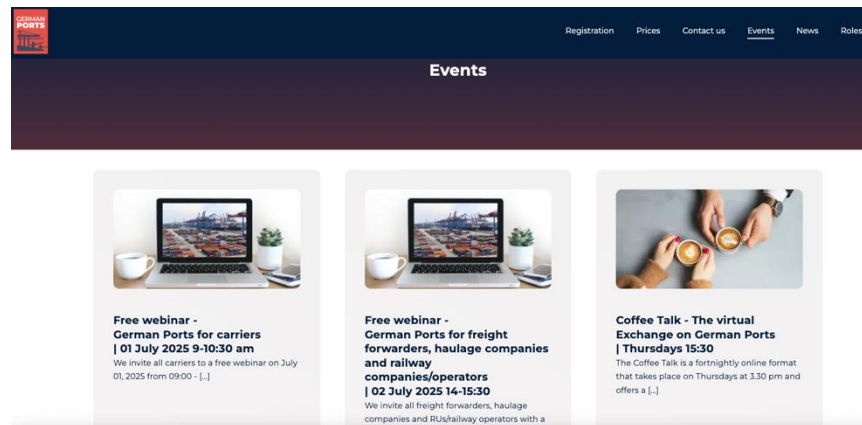
Register via <https://www.germanports.com/en/registration/>.

This is needed to prepare contractual and technical setups.

3

Inform your partners and sub-contractors

All parties in the supply chain needing to receive Pick-Up Rights will need to be registered and production ready until the 1st October 2025. Sample customer letters are available via <https://germanports.com/en/reeder/>.



01

Introduction to Secure Release Order: What is changing and why?

02

Next Steps: What preparations are necessary?

03

Functions for Carriers: How does SRO work?

04

FAQs

Creating a Release Order.



Via EDI / XML Interface

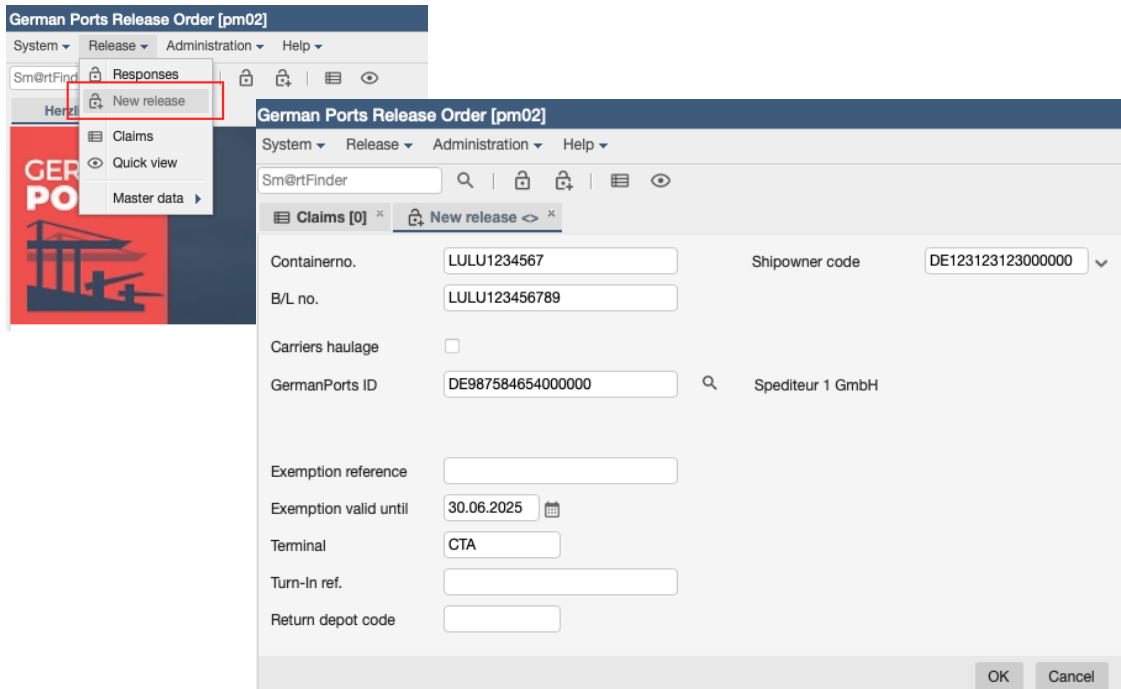
- Send a COREOR with the message function “CREATE” / Release Order XML to German Ports.



If no Initial Release Party is specified, the Pick-Up Right will be assigned to yourself (such as for a carriers' haulage case).



Via Web-Interface



German Ports Release Order [pm02]

System ▾ Release ▾ Administration ▾ Help ▾

Sm@rtFinder 🔍 | 🔒 | 📄 | 👁

Herz

- Responses
- New release**
- Claims
- Quick view
- Master data ▶

German Ports Release Order [pm02]

System ▾ Release ▾ Administration ▾ Help ▾

Sm@rtFinder 🔍 | 🔒 | 📄 | 👁

Claims [0] × **New release** ×

Containernr. LULU1234567 Shipowner code DE123123123000000 ▾

B/L no. LULU123456789

Carriers haulage ☐

GermanPorts ID DE987584654000000 🔍 Spediteur 1 GmbH

Exemption reference

Exemption valid until 30.06.2025 📅

Terminal CTA

Turn-In ref.

Return depot code

OK Cancel

Exemplary illustration of the possible actions for carriers in German Ports

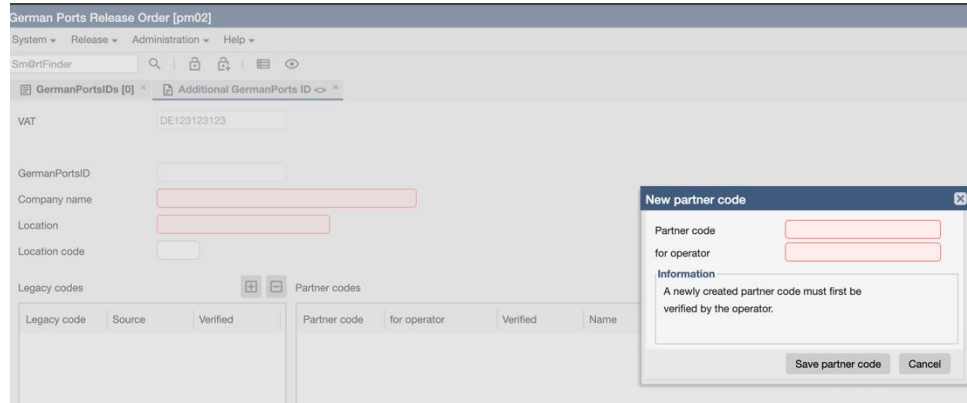
When creating Release Orders, carriers must specify the Initial Release Party (IRP). Carriers have two options:

Option 1: Use of German Ports ID

- The German Ports IDs of all registered companies will be published on the German Ports website.
- These can be used by shipping companies to match them with their own internal IDs.
- The German Ports IDs then need to be used when specifying the IRP in the COREOR.

Option 2: Use of Partner Code Mapping in German Ports

- After registering, companies can add and manage carrier partner codes, but only if the carriers choose to use this option!
- Carriers must first confirm the entry before a partner code becomes active.
- Carriers can then include their partner codes when sending release orders, which are matched to the corresponding German Ports ID.



The screenshot shows the 'German Ports Release Order (pm02)' interface. A 'New partner code' dialog box is open, prompting the user to enter a 'Partner code for operator'. Below the input field, an 'Information' box states: 'A newly created partner code must first be verified by the operator.' The dialog has 'Save partner code' and 'Cancel' buttons.

The background interface includes a search bar, a 'GermanPortsIDs [0]' section, and a 'Partner codes' table with columns: Legacy code, Source, Verified, Partner code, for operator, Verified, and Name.

Updating a Release Order.



Via EDI / XML Interface

- Send a COREOR with the message function “UPDATE” / Release Order XML to German Ports.
- Updates can be used to:
 - Change the expiration date of a release order
 - Change the initial release party of the Release Order



Via Web-Interface

German Ports Release Order [ps01]

System Release Help

SmartFinder

Claims [4]

Register trucker

Claim ID	Container no.	German Ports ID	Status	Terminal	Release at	Ends at
000008000	TEST012345	FI765432100000000	→ passed	CTD	25.06.2025 13:08:01	23.08.2025
0000012000	TEST04466777	FI765432100000000	→ passed			
0000013000	BBBBB12345	FI765432100000000	→ passed			
0000014000	SECU123456	FI765432100000000	→ passed			

Pass claim
Return claim
Revoke claim
Register trucker
Cancel
Set expiration date
Log
Hierarchy
Update
Search for
Print
Export
Select all Rows/Deselect all Rows (toggle)
Resize Columns
Display row as text
Table settings
Close

Set expiration date

Enter the new expirations date for this claim.

26.06.2025

June 2025

M	T	W	T	F	S	S
26	27	28	29	30	31	1
2	3	4	5	6	7	8
9	10	11	12	13	14	15
16	17	18	19	20	21	22
23	24	25	26	27	28	29
30	1	2	3	4	5	6

Today

Exemplary illustration of the possible actions for carriers in German Ports

Cancelling a Release Order.



Via EDI / XML Interface

- Send a COREOR with the message function “CANCEL” / Release Order XML to German Ports.



Via Web-Interface

German Ports Release Order [ps01]

System ▾ Release ▾ Help ▾

SmartFinder 🔍 | 📄 | 🔍

Claims [4] ✕

🔄 🔍 📄 📁 📊 📈 📉 📌 📍 📎 📏 📐 📑 📒 📓 📔 📕 📖 📗 📘 📙 📚 📛 📜 📝 📞 📟 📠 📡 📢 📣 📤 📥 📦 📧 📨 📩 📪 📫 📬 📭 📮 📯 📰 📱 📲 📳 📴 📵 📶 📷 📸 📹 📺 📻 📼 📽 📾 📿 📠 📡 📢 📣 📤 📥 📦 📧 📨 📩 📪 📫 📬 📭 📮 📯 📰 📱 📲 📳 📴 📵 📶 📷 📸 📹 📺 📻 📼 📽 📾 📿

🔄 🔍 📄 📁 📊 📈 📉 📌 📍 📎 📏 📐 📑 📒 📓 📔 📕 📖 📗 📘 📙 📚 📛 📜 📝 📞 📟 📠 📡 📢 📣 📤 📥 📦 📧 📨 📩 📪 📫 📬 📭 📮 📯 📰 📱 📲 📳 📴 📵 📶 📷 📸 📹 📺 📻 📼 📽 📾 📿

Claim ID	Container no.	German Ports ID	Status	Terminal	Release at	Ends at	Following claim if	Following claim owner	Trucker ID	Last change
000008000	TESTO12345	FI765432100000000	→ passed	CTD	25.06.2025 13:08:01	23.08.2025 23:59:59	000008001	FI765432100000001		25.06.2025 13:08:01
0000012000	TESTO4466777	FI765432100000000	→ passed			24.08.2025 23:59:59	0000012001	FI765432100000001		26.06.2025 14:29:26
0000013000	BBBBB12345	FI765432100000000	→ passed			24.08.2025 23:59:59	0000013001	FI765432100000002		26.06.2025 15:15:40
0000014000	SECU123456	FI765432100000000	→ passed			24.08.2025 23:59:59	0000014001	FI765432100000002		26.06.2025 15:24:55

→ Pass claim
 ← Return claim
 ← Revoke claim
 Register trucker
 ✕ Cancel
 📅 Set expiration date
 Log
 Hierarchy
 🔄 Update
 🔍 Search for
 🖨 Print
 📄 Export
 📄 Select all Rows/Deselect all Rows (toggle)
 📄 Resize Columns
 📄 Display row as text
 ⚙ Table settings
 Close

Exemplary illustration of the possible actions for carriers in German Ports

An overview of common use cases and corresponding actions.



Change of Terminal

In the case of a terminal change after a release order has been created, please **cancel the release and create a new one.**



Change of Initial Release Party

If you need to change the IRP after creating the Release Order, you can send an **update** of the COREOR or Release Order XML.

If using the Web Interface, you can **revoke the claim and re-assign it** to another party.



Change of Expiration Date

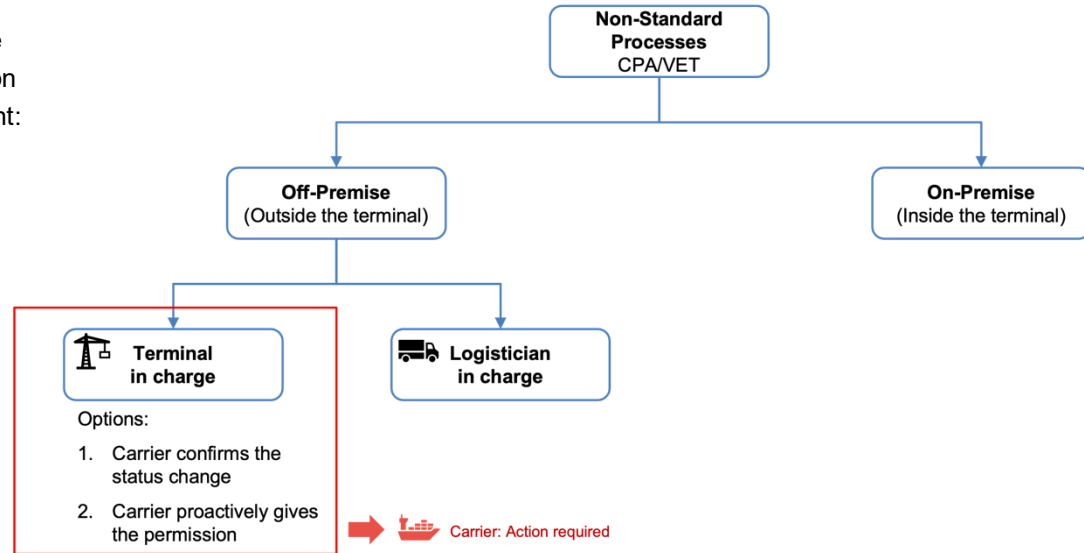
If you need to change the expiration date after creating the Release Order, you can send an update of the COREOR or Release Order XML.

You can also change the expiration date manually via the Web-Interface.

In the case of official inspections (CPA / VET) carriers might have to approve corresponding actions.

As German Ports participants, carriers are holders of the 'Root Claim'. If a terminal is instructed to organise the transport to the CPA or VET outside the terminal area, the carrier must give permission for this or confirm the change to the Pick-Up Right:

1. Option 1: Carrier confirms the change to 'Pending Inspection' status
2. Option 2: Carrier proactively gives the permission to allow the terminal to set the status 'Pending Inspection'



01

Introduction to Secure Release Order: What is changing and why?

02

Next Steps: What preparations are necessary?

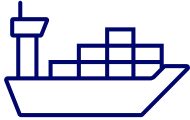
03

Functions for Carriers: How does SRO work?

04

FAQs

FAQs.

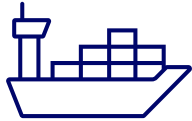


Can I also connect via an API?

An API connection is planned as part of the further development of German Ports. However, for operations starting on October 1st, 2025, releases must be transmitted via **EDI, XML or generated manually via the Web Interface.**



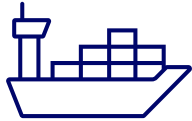
FAQs.



How does German Ports know who the receiving party (Initial Release Party) is?

Every company registered with German Ports receives a German Ports ID. This unique identifier must be provided during the release either in the COREOR, the Release Order XML, or via the web interface. German Ports uses this ID to assign the pick-up right to the correct receiving party.

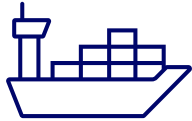




Can I view the customs status and the release status via German Ports?

No. German Ports does not provide any customs-related functionalities. The generated Pick-Up Rights are not connected to customs statuses in any way. Similarly, the release status is not available within German Ports. Access to the release status is generally only possible via platforms such as CODIS, IMP, or other comparable services.





How can my customers see the pick-up right status?

To view the status of a pick-up right, a company must be involved in the process in German Ports (i.e. must have been in the chain of subcontractors and once in possession of the pick-up right).

The status of the pick-up right can be viewed via other platforms such as CODIS, BIT, IMP - but here too only for the companies involved in the process. This restriction is imposed for security reasons.



The release reference (PIN) will no longer be used and will be replaced by a digital Pick-Up Right.

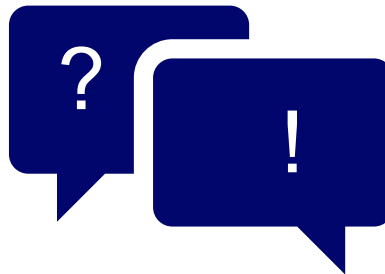


This is a
legal obligation
starting from the
01 October 2025!

NEW



Web & Interface



Further Questions?

